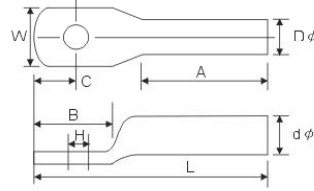


"CL" TYPE CABLE LUGS-HIGH VOLTAGE 高壓加長型端子

TERMINAL MATERIAL : COPPER TUBE



1.單孔式 CABLE LUGS CL-TYPE 1-HOLE



mm

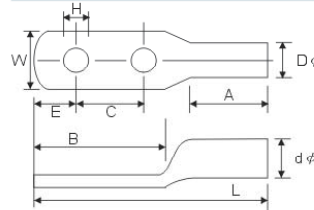
ITEM NO.	WIRE RANGE(mm) ²	H	W	A	B	C	L	Dφ	dφ	WIRE AWG
CL14-6H	10.04-16.77	6.4	17.8	28.5	16	8	50	8.8	5.8	#6 AWG
CL14-8H	10.04-16.77	8.4	14.8	28.5	16	8	50	8.8	5.8	#6 AWG
CL22-8H	16.77-26.65	8.4	18.3	28.5	18	8.5	52	11.3	7.0	#4 AWG
CL38-10H	26.15-42.41	10.5	18.3	34.0	22	10	64	12.4	9.8	#2 AWG
CL38-12H	26.15-42.41	13.0	18.3	34.0	22	10	64	12.4	9.8	#2 AWG
CL60-10H	42.41-60.55	10.5	20.5	36.0	22	10	70	14.0	11.0	1/0 AWG
CL60-12H	42.41-60.55	13.0	20.5	36.0	22	10	70	14.0	11.0	1/0 AWG
CL70-10H	60.55-76.26	10.0	21.4	38.0	26	11	72	15.0	12.0	2/0 AWG
CL70-12H	60.55-76.26	13.0	21.4	38.0	26	11	72	15.0	12.0	2/0 AWG
CL80-12H	76.26-96.23	13.0	23.2	38.0	26	13	75	16.0	13.0	3/0 AWG
CL100-12H	96.27-117.05	13.0	26.0	40.0	26	13	75	18.0	14.0	4/0 AWG
CL125-12H	127	13.0	28.0	40.0	32	13	85	20.0	16.0	250 MCM
CL150-12H	152	13.0	31.0	46.0	32	16	94	22.0	17.0	300 MCM
CL180-12H	177	13.0	33.0	46.0	32	16	98	23.0	18.2	350 MCM
CL200-12H	203	13.0	36.0	48.0	36	16	104	26.0	20.0	400 MCM
CL250-12H	253	13.0	40.0	48.0	40	18	114	28.0	22.0	500 MCM
CL325-12H	325	13.0	45.0	50.0	50	20	118	32.0	25.0	650 MCM
CL400-12H	400	13.0	48.0	60.0	54	22	130	37.0	30.0	800 MCM
CL500-12H	500	13.0	56.0	60.0	60	24	150	40.0	31.0	1000 MCM

"CL" TYPE CABLE LUGS-HIGH VOLTAGE 高壓加長型端子

TERMINAL MATERIAL : COPPER TUBE



2.雙孔式 CABLE LUGS CL-TYPE 2-HOLE



mm

ITEM NO.	WIRE RANGE(mm) ²	H	W	A	B	C	L	Dφ	dφ	WIRE AWG
CL14-6-2H	10.04-16.77	6.4	17.8	28.5	80	45	117.5	8.8	5.8	#6 AWG
CL14-8-2H	10.04-16.77	8.4	14.8	28.5	80	45	117.5	8.8	5.8	#6 AWG
CL22-8-2H	16.77-26.65	8.4	18.3	28.5	80	45	119.2	11.3	7.0	#4 AWG
CL38-10-2H	26.15-42.41	10.5	18.3	34.0	80	45	120.0	12.4	9.8	#2 AWG
CL38-12-2H	26.15-42.41	13.0	18.3	34.0	80	45	130.0	12.4	9.8	#2 AWG
CL60-10-2H	42.41-60.55	10.5	20.5	36.0	75	45	130.0	14.0	11.0	1/0 AWG
CL60-12-2H	42.41-60.55	13.0	20.5	36.0	75	45	130.0	14.0	11.0	1/0 AWG
CL70-10-2H	60.55-76.26	10.0	21.4	38.0	80	45	130.0	15.0	12.0	2/0 AWG
CL70-12-2H	60.55-76.26	13.0	21.4	38.0	80	45	130.0	15.0	12.0	2/0 AWG
CL80-12-2H	76.26-96.23	13.0	23.2	38.0	80	45	132.0	16.0	13.0	3/0 AWG
CL100-12-2H	96.27-117.05	13.0	26.0	40.0	80	45	135.0	18.0	14.0	4/0 AWG
CL125-12-2H	127	13.0	28.0	40.0	80	45	150.0	20.0	16.0	250 MCM
CL150-12-2H	152	13.0	31.0	46.0	80	45	150.0	22.0	17.0	300 MCM
CL180-12-2H	177	13.0	33.0	46.0	80	45	150.0	23.0	18.2	350 MCM
CL200-12-2H	203	13.0	36.0	48.0	80	45	150.0	26.0	20.0	400 MCM
CL250-12-2H	253	13.0	40.0	48.0	80	45	150.0	28.0	22.0	500 MCM
CL325-12-2H	325	13.0	45.0	50.0	89	45	180.0	32.0	25.0	650 MCM
CL400-12-2H	400	13.0	48.0	60.0	90	45	180.0	37.0	30.0	800 MCM
CL500-12-2H	500	13.0	56.0	60.0	93	45	180.0	40.0	31.0	1000 MCM